


Teaching Outside the Box:
Designing Mutually Beneficial
Clinical Partnerships

OCTEO
2014 Fall Conference



Marietta College

Marietta College

- * Dr. Bill Bauer, Associate Professor
- * Dr. Dottie Erb, Professor and Chair, Teacher Education
- * Dr. Carole Hancock, Associate Professor
- * Megan Miller, Principal, Beverly-Center Elementary School
- * Dr. Cathy Mowrer, Associate Professor
- * Elaine O'Rourke, Director of Field and Clinical Experiences

Contact: erbd@marietta.edu



Marietta College


With a few notable exceptions, teacher education programs across the country are educating teachers in much the same way as they have been for most of the latter part of the twentieth century . . .

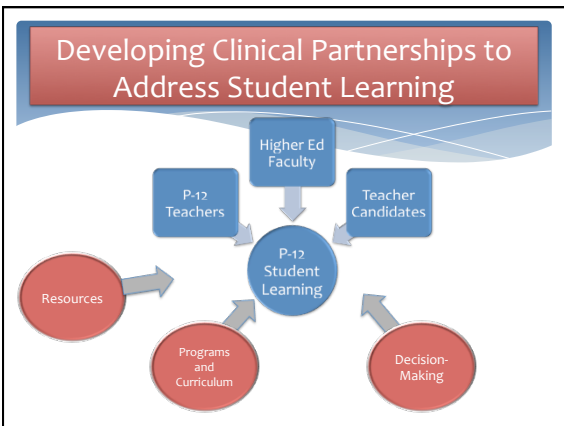
(Blue Ribbon Panel on Clinical Preparation and Partnerships)

Thoughts on Riding Horses



If the Horse is Dead . . . Dismount!





What does “Partnership” Mean?

- * Teacher Candidates: Field Students and Interns
- * College Faculty
- * P-12 Students
- * P-12 Faculty
- * Decision-Making
- * Programs and Curriculum
- * Resources

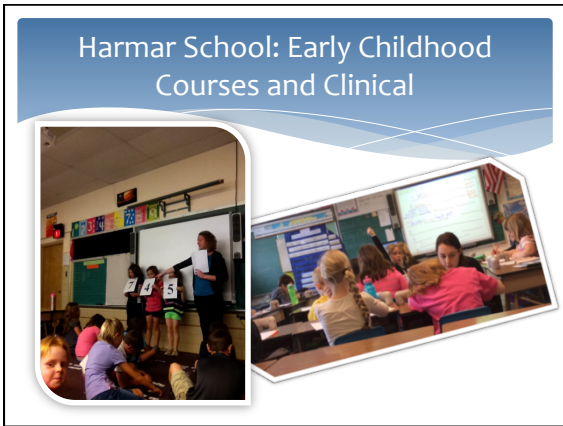
A Rubric for Partnerships

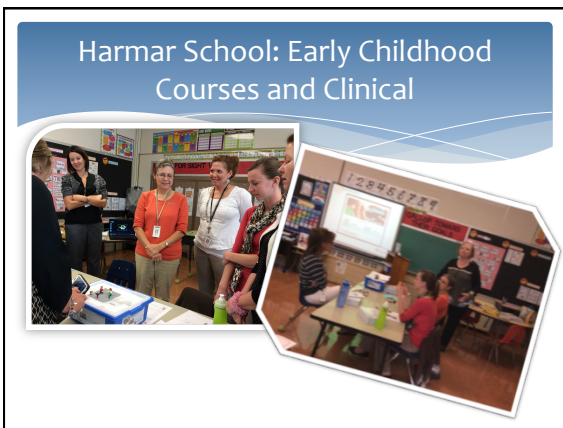


- What are the indicators at each level for
- Teacher Candidates: Field Students and Interns
 - College Faculty
 - P-12 Students
 - P-12 Faculty
 - Decision-Making Processes
 - Design and Delivery of Programs and Curriculum
 - Use of Resources

Measuring Our Partnerships







Harmar Highlights

- * Embedded faculty member
- * Internship Immersion Experience:
 - * Pre-Internship Semester – onsite with professor one day a week – lessons in classrooms
 - * Beginning of school year participation
 - * Professional development and parent conferences
 - * Co-teaching model from pre-intern through internship
 - * Scheduled “3-way meetings” – mentor, intern, faculty
- * Resource sharing to create innovation room
- * Collaborative planning for school and higher ed program improvement





Washington Highlights

- * Embedded faculty – reading methods and diagnosis of reading difficulties onsite instruction and field experiences
- * Class meets onsite for scheduled sessions
- * Classrooms of mentor teachers are used to observe methods and for demonstrations lessons by mentors and college faculty
- * Candidates spend an additional 3 hours per week with an assigned mentor teacher
- * Co-planning of Family Literacy Night : Candidates and Title I Reading teachers
- * Candidates are assigned to a specific student for diagnosis, tutoring, and development of a diagnostic report
- * Resource sharing for literacy nights

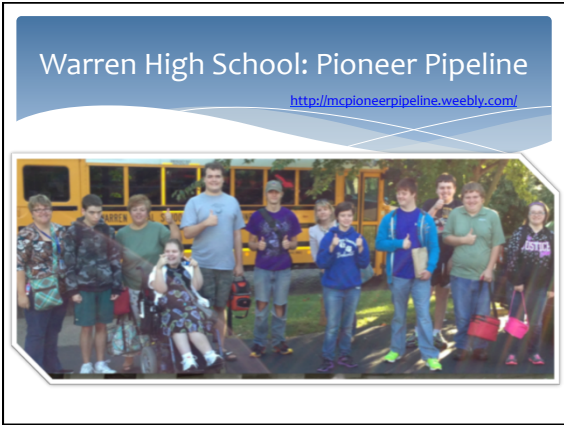
Beverly-Center School: Intervention Classes, Field and Clinical Experiences

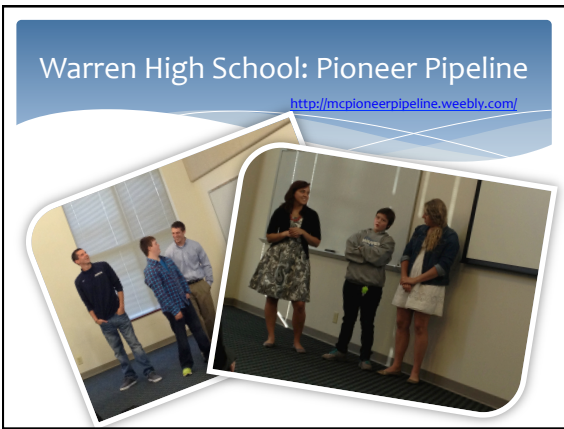


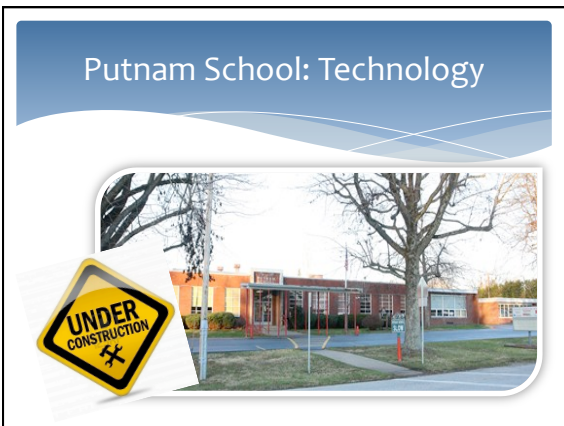


Beverly-Center School Highlights


- * Embedded faculty – Onsite delivery of instruction for intervention instructional methods, diverse learners, behavior management
- * Inclusion classrooms are used to observe methods and for co-teaching demonstrations by mentors and college faculty
- * Candidates participate in school-wide intervention program
- * Pre-intern to internship immersion model- full year clinical experience
- * Staff professional development
- * Candidates participate in school professional development and special programs
- * Candidates assist staff with assistive technology and apps
- * Resource sharing for professional development and classroom supplies







Jackson Middle School: Middle School Methods and Internship




A photograph of Jackson Middle School, a large brick building with a flagpole in front. A yellow diamond-shaped sign with the text 'UNDER CONSTRUCTION' and a hammer icon is overlaid on the bottom left of the photo.

Fort Frye High School



A photograph of Fort Frye High School, a brick building with large windows. The words 'FORT FRYE HIGH SCHOOL' are visible on the wall. A yellow diamond-shaped sign with the text 'UNDER CONSTRUCTION' and a hammer icon is overlaid on the bottom left of the photo.

Sharing and Brainstorming



A graphic illustration of a human head in profile, facing right. The interior of the head is filled with a cluster of colorful puzzle pieces in shades of yellow, green, blue, and purple.
